

New!



Features

- Designed to meet MIL-STD-810 shock and vibration
- Designed to meet EMC/EMI per MIL-STD-461 EMC
- 4U 19-inch rugged rackmount PC server chassis, 22" deep
- Windows® 7 Professional workstation with high-performance Intel® Core™ i7 processor
- Four or eight channels
- Copper, single-mode and multi-mode fiber interfaces available
- Real-time aggregate recording rates of up to 3.2 GB/sec in eight-channel configuration
- Supports Flow Control, CRC, and Copy/Loop Mode as a receiver and transmitter
- Supports 1.0625, 2.125, 2.5, 3.125 and 4.25 GBaud link rates
- Up to four front-panel removable QuickPac™ SSD drive canisters with eight drives each
- Up to 30 terabytes of storage to NTFS RAID disk array
- SystemFlow® GUI virtual instrumentation panel for fast, intuitive operation
- C-callable API for integration of recorder into application
- File headers include time stamping and recording parameters
- Optional GPS time and position stamping

General Information

The Talon® RTX 2776 is a turnkey record and playback system that is built to operate under harsh conditions. Designed to withstand high vibration and operating temperatures, the RTX 2776 is intended for military, airborne and UAV applications requiring a rugged system.

The Talon RTX 2776 is a complete turnkey recording system capable of recording and playing back multiple Serial FPDP data streams. It is ideal for capturing any type of streaming sources including live transfers from sensors or data from other computers and is fully compatible with the VITA 17.1 specification. Using highly-optimized disk storage technology, the system achieves aggregate recording rates up to 3.2 GB/sec.

The RTX 2776 can be populated with up to eight SFP connectors supporting Serial FPDP over copper, single-mode, or multi-mode fiber, to accommodate all popular Serial FPDP interfaces. It is capable of both receiving and transmitting data over these links and supports real-time data storage to disk.

Programmable modes include flow control in both receive and transmit directions, CRC support, and copy/loop modes. The system is capable of handling 1.0625, 2.125, 2.5, 3.125 and 4.25 GBaud link rates.

Optional GPS time and position stamping allows the user to mark the beginning of a recording in the recording file's header.

SystemFlow Software

The RTX 2776 includes the SystemFlow Recording Software. SystemFlow features a

Windows-based GUI (Graphical User Interface) that provides a simple and intuitive means to configure and control the system.

Custom configurations can be stored as profiles and later loaded as needed, allowing the user to select preconfigured settings with a single click.

Built on a server-class Windows 7 Professional workstation, the RTX 2776 allows the user to install post-processing and analysis tools to operate on the recorded data.

The RTX 2776 records data to the native NTFS file system, providing immediate access to the recorded data.

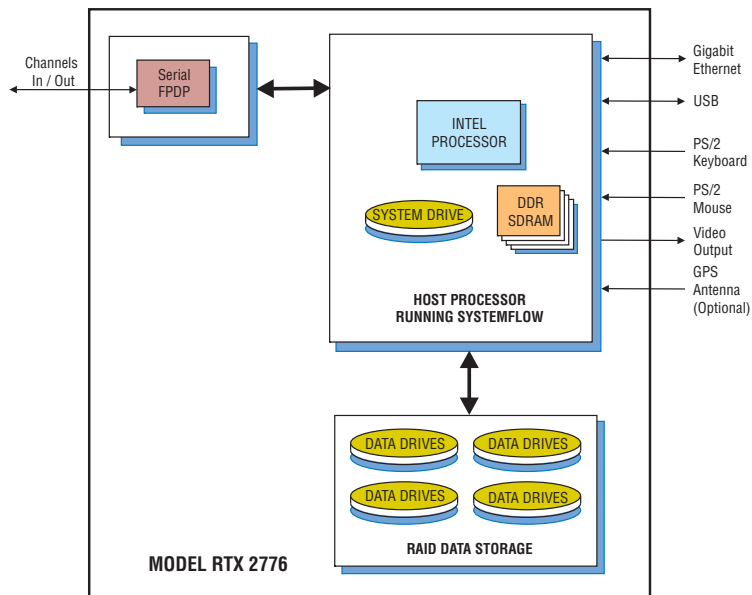
Data can be off-loaded via two rear-access gigabit Ethernet ports, two USB 3.0 ports or up to four USB 2.0 ports.

Rugged Mil-Spec Chassis

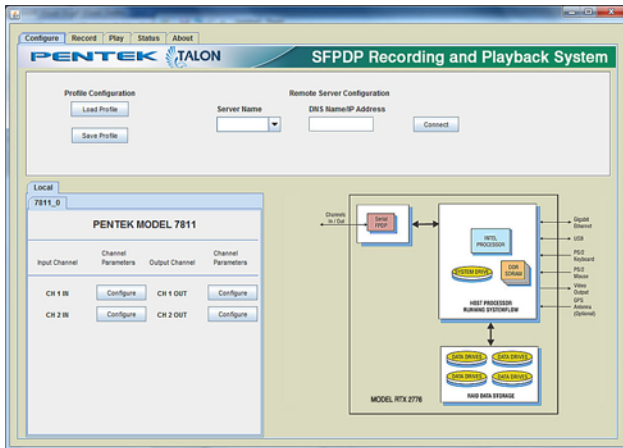
The Talon RTX 2776 uses a shock and vibration-isolated inner chassis and solid-state drives to assure reliability under harsh conditions. The chassis uses an in-line EMI filter along with rear-panel MIL-style connectors to meet MIL-STD-461 emissions specifications.

Up to four front-panel removable QuickPac drive canisters are provided, each containing up to eight SSDs. Each drive canister can hold up to 7.6 TB of data storage and allows for quick and easy removal of mission-critical data.

Forced-air cooling draws air from the front of the chassis and pushes it out the back via exhaust fans. A hinged front door with a serviceable air filter provides protection against dust and sand. ➤



► SystemFlow Graphical User Interface

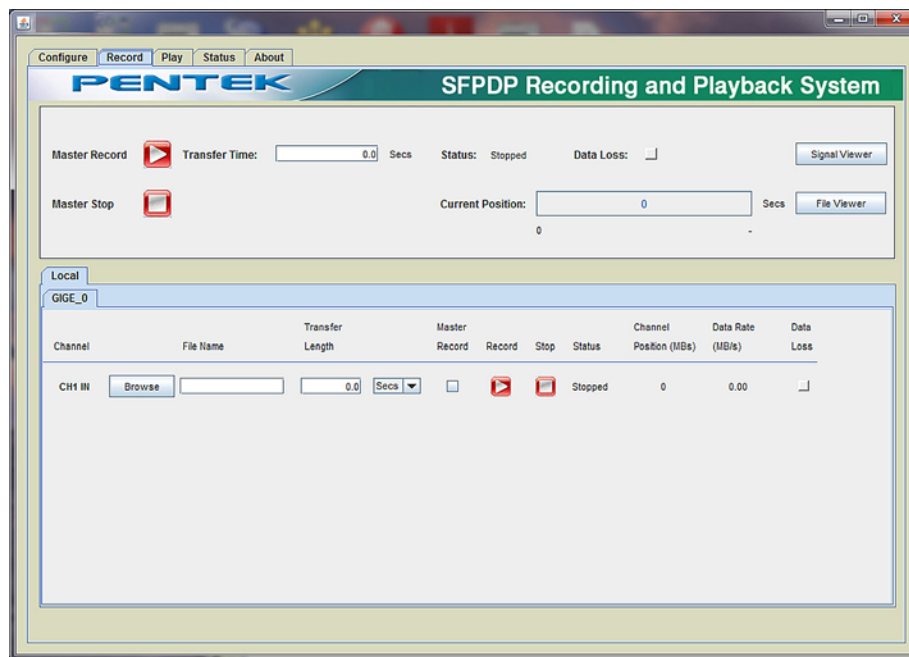


SystemFlow Main Interface

The RTX 2776 GUI shows a block diagram of the system and provides the user with a control interface for the recording system. It includes Configure, Record, Playback, and Status screens, each with intuitive controls and indicators. The user can easily move between screens to configure parameters, control and monitor a recording, and play back a recorded stream.

SystemFlow Hardware Configuration Interface

The Configure screen presents operational system parameters including temperature and voltages. Parameters are entered for each input or output channel specifying the flow control settings and the recognition of a CRC in the data stream. Each channel can also be set up to utilize Serial FPDP's copy/loop mode. All parameters contain limit-checking and integrated help to provide an easier-to-use out-of-the-box experience.



SystemFlow Record Interface

The Record screen allows you to browse a folder and enter a file name for the recording. The length of the recording for each channel can be specified in megabytes or in seconds. Intuitive buttons for Record, Pause and Stop simplify operation. Status indicators for each channel display the mode, the number of recorded bytes, and the average data rate. A Data Loss indicator alerts the user to any problem, such as a disk full condition.

By checking the Master Record boxes, any combination of channels in the lower screen can be grouped for synchronous recording via the upper Master Record screen. The recording time can be specified, and monitoring functions inform the operator of recording progress. ►

► SystemFlow API

SystemFlow includes a complete API (Application Programming Interface) supporting control and status queries of all operations of the RTX 2776 from a custom application.

High-level C-language function calls and the supporting device drivers allow users to incorporate the RTX 2776 as a high-performance server front-end to a larger system. This is supported using a socket interface through the Ethernet port, either to a local host or through an internet link for remote, stand-alone acquisition. Recorded NTFS files can be easily retrieved through the same connection.

Specifications

PC Workstation (standard configuration)

Operating System: Windows 7 Professional

Processor: Intel Core i7 processor

Clock Speed: 3.0 GHz or higher

SDRAM: 8 GB

Data Storage

Style: Up to four front-panel removable QuickPac drive canisters; up to eight SSDs contained in each canister

Location: Front panel

Capacity: Up to 30 TB

Number of Drives: Up to 32 total

Supported RAID Levels: 0, 1, 5 and 6

Serial FPDP Interface

Copper - Option 280

Cable: 100-ohm shielded twin-ax

Connector Type: SFP+

Max. Cable Length: 20 m

Multi-mode Fiber Optical - Option 281

Cable: Multi-mode fiber, 850 nm

Connector Type: LC

Max. Cable Length: Up to 300 m

Single-mode Fiber Optical - Option 282

Cable: Single-mode fiber

Connector Type: LC

Max. Cable Length: Up to 10 km

Physical and Environmental

Dimensions: 19" W x 22" D x 7" H

Weight: 50 lb, approx.

Operating Temp: -20° to +50° C

Storage Temp: -40° to +85° C

Relative Humidity: 10% to 95%, non-condensing

Operating Shock: Designed to MIL-STD 810F, method 514.5, procedures I and VI

Operating Vibration: Designed to MIL-STD 810F, method 514.5, procedure I

EMI/EMC: Designed to MIL-STD 461E, CE101, CE102, CS101, CS113, RE101, RE102, RS101, RS103

Input Power: 85 to 264 VAC, 47– 400 Hz, 600 W max.

Model RTX 2776 Ordering Information and Options

Channel Configuration

- Option -204** 4-channel record/payback
- Option -208** 8-channel record/playback

Serial FPDP Interface

- Option -280** SFP+ connectors
- Option -281** Multi-mode optical, LC connectors
- Option -282** Single-mode optical, LC connectors

Storage Options

- | | | |
|--------------------|---------------------|------------|
| Option -410 | 3.8 TB SSD storage | 3.2 GB/sec |
| Option -415 | 7.6 TB SSD storage | 3.2 GB/sec |
| Option -418 | 11.5 TB SSD storage | 3.2 Gb/sec |
| Option -420 | 15.3 TB SSD storage | 3.2 GB/sec |
| Option -425 | 23.0 TB SSD storage | 3.2 GB/sec |
| Option -430 | 30.7 TB SSD storage | 3.2 GB/sec |

Max. Data Rate

General Options (append to all options)

- Option -261** GPS time and position stamping
- Option -264** IRIG-B Time Stamping
- Option -680** 28 VDC power supply
- Option -625** Front-panel removable OS drive

**Contact Pentek for other configurations
Storage and Channel-count Options may change, contact Pentek for the latest information**

Specifications are subject to change without notice



Figure 1. Rackmount RTX chassis is designed to meet or exceed Mil Specs.



Figure 2. Chassis View showing one QuickPac canister partially withdrawn.

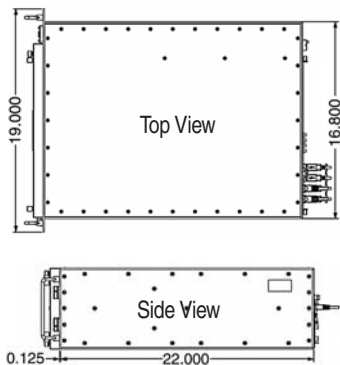


Figure 3. Dimensional drawings of the rackmount enclosure.

Extreme Rackmount Recorders

Pentek's Talon® RTX Rackmount series recorders are designed to provide a combination of high performance and large storage capacity in a military-specified rackmount chassis. Designed for field operation, the RTX Rackmount series provides up to 30 TB of SSD storage with aggregate recording rates up to 5 GB/sec.

Military Specifications

All Talon RTX rackmount recorders are designed to meet military specifications for temperature, altitude, shock, vibration, radiated emissions, conducted emissions, ESD, sand and dust.

The following list contains these military specifications.

- **Vibration:** MIL-STD-810F, method 514.5
- **Shock:** MIL-STD-810F, method 516.5
- **EMI/EMC:** MIL-STD-461E, CE101, CE102, CS101 CS114, RE101, RE102, RS101, RS103
- **ESD:** MIL-STD-1686A
- **Sand & Dust:** MIL-STD-810F, method 510

Chassis Design

All Talon RTX rackmount chassis are specially designed using heavy-duty wrought aluminum extrusions to provide superior torsional strength. Extrusions are partially overlapped for superior EMC. The chassis is 4U in height, with a depth of only 22". A fully-loaded chassis weighs as little as 45 lb.

Rear-panel I/O includes bulk-head mounted SMA connectors, a 4-pin 38999 power connector as well as motherboard I/O. Rear-panels are modular and customizable allowing the end-user to specify the desired connectors.

The Operating System drive can be internally hard-mounted or can be made removable. Additionally an internally-mounted optical DVD writer is optional. All drives, OS, DVD and data drives are protected from dust with EMI filters.



Figure 4. The rear panel includes all analog signal connections and can be customized to suit the application requirements.

QuickPac Canisters

In order to provide field engineers the ability to quickly remove and replace storage drives in the field, Pentek has developed the QuickPac™ canisters for use in the Talon RTX rackmount chassis. These canisters hold eight SSDs, providing up to 7.68 TB of storage capacity in each canister. Up to four QuickPac canisters can be installed in a Talon RTX rackmount chassis, providing a total storage capacity of 30 TB.

Fastened by four thumbscrews, QuickPac canisters can easily be swapped in the field, allowing users to replace those filled with data with new, empty ones with very little down time. QuickPac canisters can be transported to the lab for offload or analysis, using one of Pentek's Talon offload or playback systems.

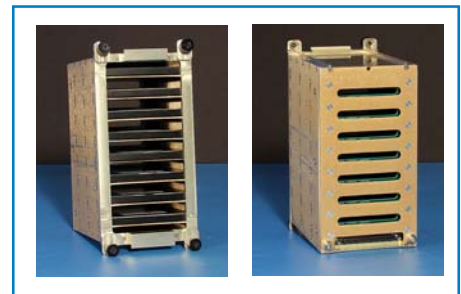


Figure 5. Front and rear view of the QuickPac canister showing the eight SSDs inside.

Floating Inner Chassis

In order to withstand conditions of high vibration and shock, the RTX rackmount chassis is designed to isolate all critical system components by placing them on a floating inner chassis.

This inner chassis is suspended using multiaxis mounts that attenuate externally-transmitted shock and vibration energy. This allows the system to perform flawlessly in aircraft, ships, ground vehicles, UAVs or any other areas of high shock or vibration.

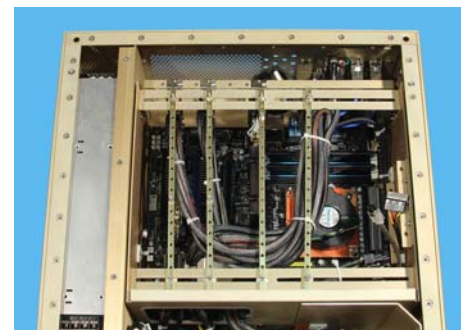


Figure 6. The inner chassis floats with respect to the outer enclosure to improve isolation from shock and vibration.

Cooling and Filtering

Every RTX recorder includes a high-powered forced air-cooling system, to allow the proper transfer of heat from hot system components out the back of the chassis. Cool air is pulled from the front of the system through the QuickPac drive packs and forced over the hottest system components to ensure optimal cooling.

High-powered fans can be controlled via system software to allow the system to

run quietly with lower cooling levels or at maximum air flow levels. This can be adjusted to match the user’s application.

Every RTX recorder includes filtering necessary to protect the system as well as the surrounding operating environment. EMI filters are placed on the front and rear of the chassis, to protect the surrounding environment from radiated emissions. A removable front panel filter protects the system against dust and sand.

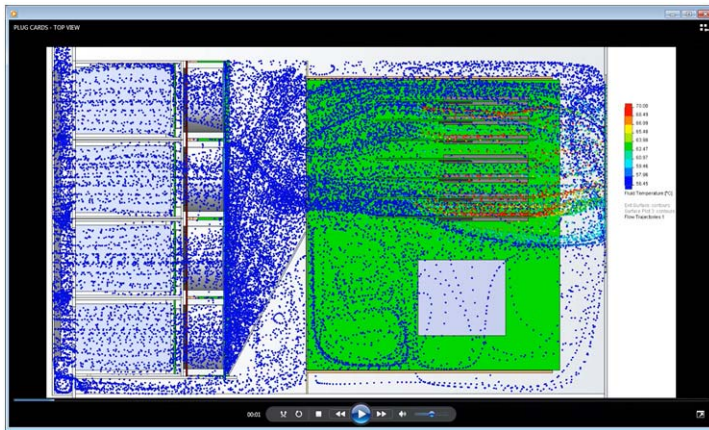


Figure 7. Airflow map shows the extensive ventilation provided to all components inside the RTX rackmount recorder.

Modular Power Supply

Every Talon RTX rackmount Recorder includes a 600 Watt, 85 – 264 V, 47– 400 Hz AC power supply. The power supply has an inline EMI filter to protect against conducted emissions and is isolated from the other electronics in the system, via an isolated chassis compartment. The 400 Hz rating allows every RTX rackmount recorder to operate in aircraft and other environments where smaller, 400 Hz generators are used. For applications that require DC power, 24 V and 28 V DC power supplies are available to replace the AC power supply.

Talon Solutions Chart

The chart below compares Pentek’s different Talon Recording System solutions. As seen here, the RTX Rackmount series

provide high performance and large storage capacity in a rugged package that meets high-level military specifications.

| Talon Chassis Type | RTS-COTS Rackmount | RTR Portable | RTR Rackmount | RTX Rackmount | RTX 1/2 ATR |
|-------------------------------|-------------------------|-----------------------|-------------------------|----------------------------------------------------------------------------|------------------------------------------------------------|
| Dimensions (H"xW"xL") | 7x19x26 | 13.4x16.9x9.5 | 7x19x21/26 | 7x19x22 | 8.1x7.1x16.5 |
| Weight (lb) | 60–85 | 30–35 | 45–85 | 45–60 | 30–35 |
| Cooling | Forced-air | Forced-air | Forced-air | Forced-air | Conduction |
| Storage Drive Type | HDD | SSD | SSD | SSD | SSD |
| Max. Storage Capacity (TB) | 60 | 7.6 | 38.4 | 30.7 | 3.8 |
| Max. Record Rate (MB/sec) | 1600 | 1600 | 5000 | 5000 | 500 |
| Drive Removal | Individual (with trays) | Individual (no trays) | Individual (with trays) | QuickPac Canisters | Internal (needs disassembly) |
| Operating Temperature (deg C) | 5 to 45 | 0 to 50 | -10 to 55 | -20 to 55 | -40 to 71 |
| Operating Altitude (ft) | 10,000 | 10,000 | 10,000 | 15,000 | 65,000 |
| Shock | – | 15 g | 15 g | MIL-STD-810F Method 516.5 | MIL-STD-810F Method 516.5 |
| Vibration | – | 1.4 g 20–500 Hz | 1.4 g 20–500 Hz | MIL-STD-810F Method 514.5 | MIL-STD-810F Method 514.5 |
| EMI/EMC | – | – | – | MIL-STD-461E CE101, CE102, CS101 CS114, RE101, RE102 RS101, RS103 | MIL-STD-461E CE101, CE102, CS101 RE101, RE102, RS101 |
| ESD | – | – | – | MIL-STD-1686A | – |
| Sand and Dust | – | – | – | MIL-STD-810F Method 510 | MIL-STD-810F Method 510 |

Appendix A - System Specifications Summary

| Parameter | Condition | Specification |
|-----------------------|---------------|----------------------------------------------------------------------------------------------------------------------------------------------------------------------------------------------------------------|
| Temperature | Operating | -20° C to +55° C |
| | Non-operating | -40° C to +70° C |
| Altitude | Operating | 0 to 15,000 ft |
| | Non-operating | 0 to 40,000 ft |
| Humidity | Operating | 0-95%, non-condensing |
| Fungus | Operating | No fungus nutrient material shall be used |
| Shock | Operating | MIL-STD-810F, Method 516.5, Procedure I (functional shock), 20 g half sine, 12 msec in each axis |
| Vibration | Operating | MIL-STD-810F, Method 514.5, Procedure I |
| Airborne Noise | Operating | 60 dBA max at 1 meter from the equipment |
| Structure-borne Noise | Operating | Maximum structure-borne noise per MIL-STD-704-2 is no greater than 60 dB one-third octave L _a , (Type III) |
| Blowing Dust | Operating | The unit shall resume specified performance after exposed to settling-dust conditions defined in MIL-STD-810F, Method 510, Procedure II - See Note 1 |
| Inclination Angles | Operating | The unit shall maintain specified performance when subjected to: <ul style="list-style-type: none"> ● A static pitch angle of ±5° ● A list angle of 15° ● A roll angle of 45° |

Note 1: Standard maintenance includes cleaning of the dust filter(s) as required.

Appendix B - Emissions Specifications Summary

- CE101: Conducted Emissions, Power Leads, 30 Hz to 10 kHz
- CE102: Conducted Emissions, Power Leads, 10 kHz to 10 MHz
- CS101: Conducted Susceptibility, Power Leads, 30 Hz to 50 kHz
- CS114: Conducted Susceptibility, Bulk Cable Injection, 10 kHz to 400 MHz
- CS116: Conducted Susceptibility, Damped Sinusoidal Transients, Cable and Power Leads, 10 kHz to 100 MHz
- RE101: Radiated Emissions, Magnetic Field, 30 Hz to 100 kHz
- RE102: Radiated Emissions, Electric Field, 10 kHz to 18 GHz
- RS101: Radiated Susceptibility, Magnetic Field, 30 Hz to 100 kHz
- RS103: Radiated Susceptibility, Electric Field, 10 kHz to 40 GHz

Specifications are subject to change without notice